



XY800_DR IPC

iConEx XY800_DR series IPC is a explosion protected computer and touch operation terminal designed for industrial applications in hazardous environments. It is operated by a touch screen or an external explosion-proof computer keyboard&mouse. It is widely used in information and automation control systems in explosive hazardous areas in the petroleum, chemical, pharmaceutical, military and other industries.

Benefits of XY800_DR IPC

- All-metal housing, whole device explosion-proof design, for Zone 1, 21, and H2 environment.
- 12" to 22" multiple display sizes optional.
- Intrinsically safe Ex i touch screen, ESD protected, can be operated in explosive area directly.
- Flexible configuration of processor, memory and hard disk.
- Dual Ethernet ports provides redundancy connection.
- Low power consumption, fanless design, significantly reducing equipment failure rate.
- Industrial-grade design, highly reliability and stability, protection level IP66 for whole device.
- Can be used in various harsh environments, max. ambient temp. range: -40~60°C.
- Embedded installation facilitates different explosion-proof type requirements.



Contact Us
+91 99878 81335



Send Your Enquiry To
support@paneltechnologies.in

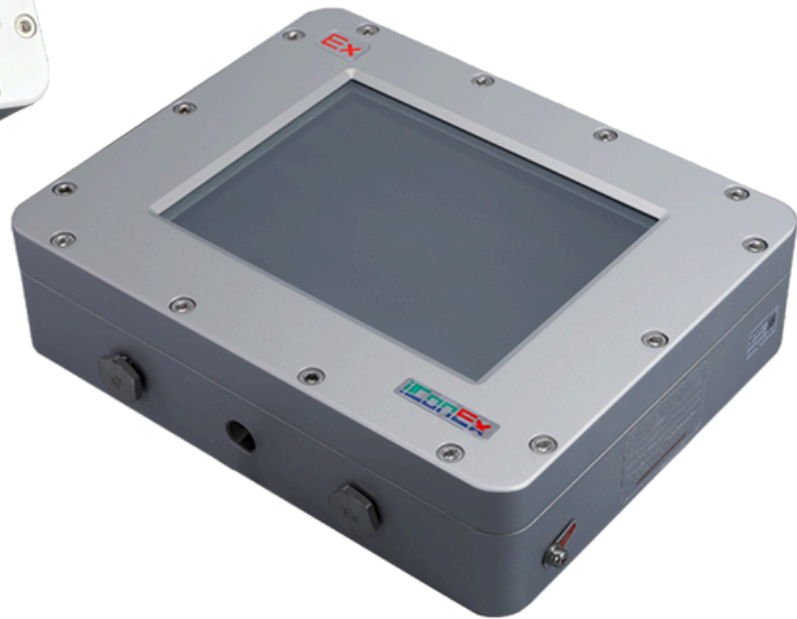


Website
www.paneltech.in

Model	XY800_12D RPC	XY800_15D RPC	XY800_17D RPC	XY800_19D RPC	XY800_15B DRPC	XY800_19B DRPC	XY800_22D RPC
Display type	TFT_LCD/LED backlight						
Display size	12.1"	15"	17"	19"	15.6"	18.5"	21.5"
Resolution	1024*768 (4:3)		1280*1024 (5:4)		1920*1080 (16:9)		
Brightness	300 cd/m² (Hight brightness≥600cd/m² optional)						
LCD lifespan	50000hrs						
Display	Touch panel intrinsically safe explosion-proof , anti-static treatment, multi-touch						
Operation	Touch panel operation or keyboard&mouse optional						
CPU	Intel Core i5 11th @4.2GHz/12th@4.4GHz /Intel Core i7 11th @4.7GHz/12th @4.7GHz optional						
Memory	8GB (16GB/32G optional)						
Storage	256GB (512GB/1T/2T optional)						
Interface	2*RJ45/ 6*USB Device 3.0						
Serial port	1*RS485/RS232, 4*RS232						
Support system	Win 10 Enterprise LTSC 64-bit / Linux 64-bit optional						
	(*Note: If you need to install Win7/Win10 Enterprise LTSC 1607 or below system versions, you can choose Core i5 6th model)						
Ambient temp.	NT: 0 ~ 50℃ (LT: -20 ~ 60℃ / WT: -40 ~ 60℃ optional)						
Storage temp.	-40 ~ 70℃						
Ambient humidity	10 ~ 90 % RH (no condensation)						
Rated power	30W Max 100W						
Voltage level	220VAC or 110VDC/24VDC						
Electrical interface	4*M20x1.5H		5*M20x1.5H		6*M20x1.5H		
Product weight	about 18Kg	about 26Kg	about 33Kg	about 37Kg	about 32Kg	about 37Kg	about 39Kg
Protection level	IP66 (whole device)						
Ex-proof mark	Ex db ib IIB+H2 T6 Gb / Ex ib tb IIIC T80℃ Db						
Certification	IECEX, ATEX, CNEX						

Images of

XY800_DR IPC



India contract detail



**Panel Technologies
India Private Limited**



139/10, Gala no. B/2, Osiya Matadi Compound,
Kalher, Thane, Maharashtra 421302



+91 99878 81335



support@paneltechnologies.in



www.paneltech.in